

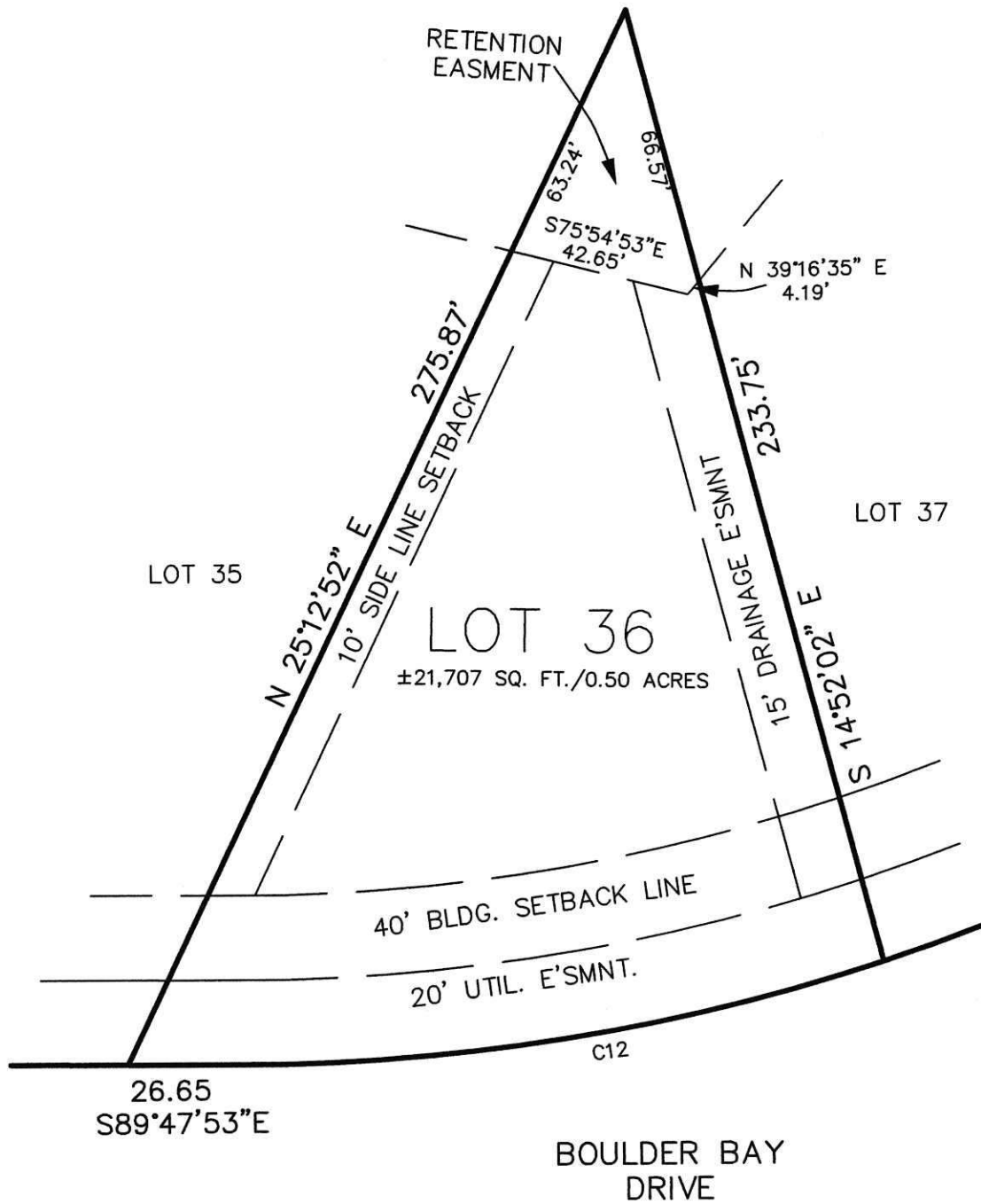


Bollinger, Lach & Associates, Inc.

SITE PLAN

RE: 26647 BOULDER BAY

| CURVE TABLE | | | | | |
|-------------|--------|--------|--------|---------------|-----------|
| CURVE | RADIUS | LENGTH | CHORD | BEARING | DELTA |
| C12 | 480.00 | 153.36 | 152.71 | S 81°02'56" W | 77.34 |
| | | | | | 18°18'23" |



SCALE: 1"=40'

SIDELINE SETBACKS BETWEEN LOTS MUST BE A COMBINED 20' MINIMUM, WITH 8' MINIMUM ALLOWED ON ONE LOT.

| | | | | | |
|--|---|-----------|-----------|-------------|---------------|
| CONSULTING ENGINEERS & LAND SURVEYORS | Bollinger, Lach & Associates, Inc. | | | | |
| | 24545 BRICK RD. • SOUTH BEND, IN 46628 • (574)-243-5700 | | | | |
| DRAWN: <u>AB</u> | CHKD: <u>AB</u> | FB: _____ | RF: _____ | DISK: _____ | JOB: 791S-000 |

e:\QWS\dwg\lotcornerstake.dwg